

HANDBOOK

USFET



HEADQUARTERS COMMAND

FRANKFURT - AM - MAIN

HANDBOOK

USFET

FRANKFURT - AM - MAIN

1945

HEADQUARTERS COMMAND

INFORMATION & EDUCATION, S-2, S-3 SECTION

HANDBOOK

Prepared and published under the direction of the Headquarters Commandant, by the Information and Education Section, in collaboration with other sections of Headquarters Command. Photos by Bill Cray, Army Pictorial Service; cartoons by Gill Fox, Stars and Stripes; maps by Howard Hiatt and James Sturdivan, Utility Engineers; printing and engravings by AG Printing Division; research by Gene Cadieux, make-up by Bernard Spencer, and edited by Richard Bauer, under the supervision of Lt. Thorsten R. Carlson, I and E Officer and of Lt. Robert Emery and Lt. Dwight Diller, Assistant I and E Officers.

HEADQUARTERS COMMAND
INFORMATION & EDUCATION, 2-2, 2-3 SECTION

FOREWORD

A brief glance through the pages of this little handbook will show you its purpose. It is not a detailed directory, but a guide to the location of the various administrative agencies and recreational facilities of the Headquarters. The compilers hope that it will be an aid to visitors to Frankfurt-am-Main and to those stationed in the city, and that their brothers—and sisters—in arms will grant them some tolerance, as changes are bound to occur.

CONTENTS

	<i>page</i>
WHERE CAN I FIND OFFICIAL AGENCIES?	1
WHERE CAN I GO FOR PERSONAL NEEDS?	6
WHAT CAN I DO TONIGHT?	9
WHERE CAN I GO TO CHURCH?.	13
HOW CAN I GET THERE?	14
<i>Sectional Maps</i>	23



MILITARY INSTALLATIONS

"The school master is abroad, and I trust to him, armed with his primer, against the soldier in full military array." . . .

Henry Peter, Lord Brougham

Frankfurt-am-Main — insofar as the military installations are concerned — may confuse the GI newcomer, but he will soon learn that the Restricted Area is the focal point of all official activity. Either in that area or adjoining it are most of the official agencies.



THE HEADQUARTERS

One cannot overlook the huge I. G. Farben building that houses the Headquarters. The long stretch of pavement extending from Heddernheim to downtown Frankfurt, running roughly from north to south, and dividing the Restricted Area, is the main military artery. Along this route you find Gate 4, the northern entrance to the Restricted Area. Through Gate 4, south on Eschersheimer Landstrasse to the WAC Circle, turning west on Bremmer toward the I. G. Farben building, passing through Gate 2, continuing on Reuterweg past the Opera House, passing TSFET on Taunus Anlage, and continuing on Mainzer Landstrasse to Hohenzollern Strasse and downtown Frankfurt, you will pass most of the military agencies in the Frankfurt area. You can easily find the others by using the index map in the back of this book and by consulting the detailed sectional maps.

MILITARY INSTALLATIONS

APO 757 (Map C)

Fürstenberger Strasse

Hours: 0830-1715, closed Sundays

AMERICAN RED CROSS, FIELD DIRECTOR'S OFFICE

2 Mainzer Landstrasse (Map E)

Hours: 0900-1200, 1300-1800 daily

2000-2200 Tuesday and Thursday

BILLETS (Map E)

Quartermen & Accommodations -- 4-6 Mainzer Landstr.

DISPENSARIES

2nd General Medical Dispensary -- Holzhausen Strasse
(Map D)

2nd Bn. 156th Inf. Regt. Heddernfeld Str., Heddernheim
(Map A)

29th Inf. Regt. Area (Map B)

3118th Sig. Serv. Gp. - "C" Area (Map B)

97th Gen. Hospital - Opposite "C" Area . (Map B)

Hours: 0900-1700, closed Sundays

FINANCE OFFICE (Map E)

15 Taunus Anlage

FIRE STATIONS

Engineer Utilities - Rear of IG Farben Bldg. (Map C)

2nd Bn. 156th Inf. Regt. - Heddernheim . (Map A)

1214th FF Platoon - Eckenheimer Landstr. . (Map D)

HEADQUARTERS BUILDINGS

Foreign

Allied Missions - 108 Oberlindau . . . (Map C)

British - Höchst

FIAT - Höchst (Höchst Diagram)

Military Gov't. - 45 Bockenheimer Anlage . (Map E)

TSFET

Allianz Building - Taunus Anlage . . . (Map E)

69 Burger Strasse (Map E)

Elizabethan School - 100 Eschersheimer
Landstrasse (Map D)

Lurgi Haus - Gervinus Strasse (Map C)

USFET - IG Farben Building (Map C)

U. S. Naval Forces, Germany - Bertram
Strasse (Map D)

INFORMATION BOOTHS

Hindenburg Platz (Main Railway Station) . (Map E)

Main Entrance to IG Farben Building . . (Map C)

"D" Gate, IG Farben Annex (Map C)

INFORMATION AND EDUCATION OFFICES

TSFET - Lurgi Haus, 17 Gervinus Strasse . (Map C)

USFET - Hq. Command, 102 Bockenheimer
Landstr. (Map C)

Unit School, 51 Liebig Strasse (Map C)

MESS HALLS

Officers'

Casino, Rear of IG Farben Building . . (Map C)

Carlton Hotel - Hindenburg Platz . . . (Map E)

Park Hotel - Wiesenhütten Strasse . . . (Map E)

(Transient Officers inquire at Quarters
and Accommodations Office) (Map E)

Enlisted personnel

Service Co. Mess No. 1 - NW of
IG Farben Bldg. (Map C)

Sv. Co. Mess No. 2 - Hansa Allee . . . (Map C)

WAC - Hansa Allee (Map C)

(Transient EM Mess - Grimm School,
Ackermann Strasse) (Index Map)

MILITARY POLICE STATIONS

Provost Marshal - 30 Wiesenhütten Strasse . (Map E)

Post Guardhouse - Homburger Landstrasse . (Map B)

Town Office - 42 Kaiser Strasse (Map E)

201st M. P. Co. - Berufsschule IV
Güntersburg Park (Index Map)

234th M. P. Co. - Theobald Ziegler Strasse
(Near "C" Area) (Map B)

RADIO STATION

Höchst - 1 Burg-Graben (Höchst Diagram)

SPECIAL SERVICE

TSFET - Elizabethan School,
100 Eschersheimer Landstr. (Map D)

USFET - Hq. Command, 12 Taunus Anlage (Map E)



SERVICE CO. MESS NO. 1

PERSONAL SERVICE

"Lycurgus . . . used to say that long hair made goodlooking men more beautiful, and ill-looking men more terrible." . . .

Plutarch

Personal Service, like recreational facilities, promises to become more extensive as conditions become more settled, but always with the reservation, of course, that much of the care a soldier gives himself and his equipment depends upon his resourcefulness and industry.



Pressing and tailoring services are available for Officers and EM on Eschersheimer Landstrasse, near the WAC Area, where clothes can be pressed, mended, altered and insignia attached. All units have also provided barbershops, showers and tailoring facilities.

PERSONAL SERVICE

BARBER SHOPS

EM: Respective Units

Officers: No. 1 - 89 Eschersheimer Landstrasse (Map D)

Hours: 0900-1800, closed Sundays

No. 2 - Casino Basement (Map C)

Hours: 0800-1800, closed Sundays

BEAUTY SHOP

162 Eschersheimer Landstrasse (Map D)

Hours: By appointment

CABLEGRAMS

APO - Fürstenberger Strasse (Map C)

(To Continental United States and England)

Hours: 0830-1715, closed Sundays

Western Union - 88 Eschersheimer Landstr. (Map D)

(To United States and Canada)

Hours: 0900-1900 daily

DRY CLEANING

EM: Respective Units

Officers: 29 Hansa Allee (Map C)

WAC Laundry: Miquel Allee and Hansa-

Allee (Map C)

PHOTOGRAPHIC DEVELOPING

- 55 Kaiser Strasse (Map E)
1 Börsen Platz (Map F)

PHOTOGRAPH STUDIO

- 73 Bürger Strasse (Map E)

POST EXCHANGES

- Gift Shop - 21 Holzhausen Strasse (Map D)
Main EM Exchange - "A" Area (Map B)
PX "C" - Eschersheimer Landstrasse . . . (Map D)
PX "G" - 48 Taunus Strasse (Map E)
PX Office - 142 Eschersheimer Landstrasse . (Map D)
WAC Exchange - WAC Circle, Eschers-
heimer Landstrasse (Map D)

SALES STORES

- Officers: Excelsior Hotel - Hohenzollern Str. (Map E)
Ribbon Store: Carlton Hotel - Hindenburg
Platz (Map E)
(For all U. S. Military Personnel)

SHOE REPAIR

- EM: Respective units
Officers: 29 Hansa Allee (Map C)

TAILORING

- Pressing Shop - 223 Eschersheimer Landstr. (Map D)
Hours: 0800-1700 Monday to Friday
0800-1200 Saturday
Excelsior Hotel: (Officers) - Hindenburg Platz (Map E)
Hours: 1000-1700

RECREATION

"No pleasure endures unseasoned by variety."

Publilius Syrus



Anyone who came to Frankfurt-am-Main in the early spring knows that recreation is a "growing thing." In those days, about the only place one could go for amusement, except theaters Nos. 7 and 8, was Rumpelmeyer's, where the Third Army had established the "Battling "B" Country Club". Then the GI Nickel Bar in the basement of the Schumann Theater opened. Later the Red Cross installed a coke bar on the upper floor of that building and opened the "Roundup Club" in "A" Area. As other units moved into the city, they established recreation centers of their own. More theaters were opened. Athletic fields and swimming pools were acquired. Today there are country clubs, tennis courts, and riding stables for both officers and EM.

The crowning achievement to date in recreational facilities for EM was the opening of the Palmengarten Red Cross Club September 17. An amazing transformation has taken place there since it was used as a general messhall for SHAEF personnel.

Judging from the growth of the recreational program this summer, prospects are bright for a continued broadening of recreational facilities.

RECREATIONAL FACILITIES

ATHLETIC FIELDS

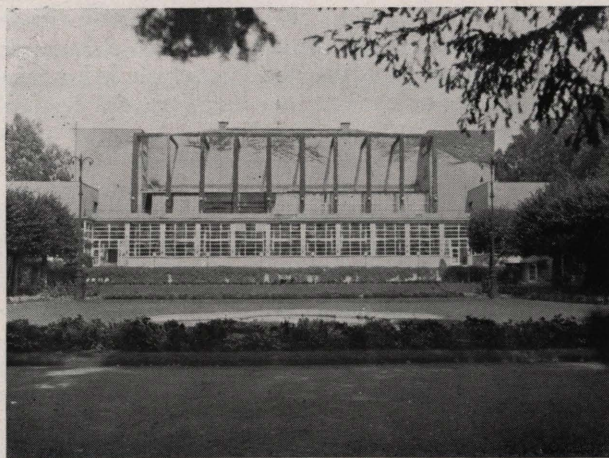
1. Victory Park (Index Map)
2. Frankfurt Club - Eckenheimer Landstrasse (EM) (Map D)
3. IG Farben - Rear of IG Farben Building (Map C)
4. Palmengarten - Siesmayer Strasse (Map C)
5. University Stadium - Miquel Allee (Map C)
6. Huth Park - Near "A" Area (Index Map)
7. Bertrams Wiese - Ammelburg Strasse (Map D)
8. Ost Park - Ost Park Strasse (Index Map)
9. Eschersheimer - Eschersheimer Landstr. (Index Map)
10. Sportplatz - Offenbach (Index Map)

COUNTRY CLUBS

- EM: Oberursel (Index Map)
 Officers: Friedrichshof Castle, Kronberg (Index Map)
 Golf Course (Index Map)

GYMNASIUMS

- Victory Park (Index Map)
 Elizabethan School (Fencing only) (Map D)



PALMENGARTEN AMERICAN RED CROSS CLUB

LIBRARIES

- A. E. F. Club - Homburger Road (Index Map)
 Hq. Comd. Recreation Center - Heddernheim (Map A)
 I & E Unit School - 51 Liebig Strasse (Map C)
 Special Service - 82 Hansa Alle (Map D)

RACE TRACK

- Elkhorn Stables - Bad Homburg (Index Map)

RED CROSS CLUBS

- "Roundup Club" - 325 Friedberger Landstr. (Map B)
 "Do-Nut Dugout" - Heddernheim (Map A)
 Palmengarten - Siesmayer Strasse (Map C)
 Schumann Club - Hindenburg Platz (Map E)

- RENDEZVOUS CLUB - 56 Kaiser Strasse (Map E)

THEATERS

1. WAC Area (Map C)
2. "C" Area - Marbach Weg (Map B)
3. "B" Area - Friedberger Landstrasse (Map B)
4. "D" Area - Homburger Landstrasse (Index Map)
5. Officers' Casino (Map C)
6. Palmengarten Red Cross Club (Map C)
7. Exli-Theater - Hohenzollern Strasse (Map E)
8. Gloria Theater - 28 Kaiser Strasse (Map E)
9. UT-Lichtspiele - 205 Homburger Landstr. (Index Map)
10. Atrium - Heddernheim (Map A)
11. Rundfunk - 33 Eschersheimer Landstr. (Map F)
12. Oberursel (Index Map)
13. Kasino - Höchst (Officers) (Höchst Diagram)
14. Neues Theater (Höchst Diagram)
15. National Theater - Offenbach (Index Map)
16. Söhnngen Theater - Königstein (near Kronberg Castle)

RIDING STABLES

EM: Powder River Stable (Index Map)
Officers: Elkhorn Stables - Bad Homburg (Index Map)

ROWING

Germania Rowing Club - 65 Schaumainkanal (Map E)

SKI LODGE

Route 8 to Königstein and Reifenberg

SNACK BARS

AEF Club - Homburger Road (Index Map)
Palmengarten Red Cross Club -
Siesmayer Strasse (Map C)
GI Nickel Bar - Hindenburg Platz (Map E)
Officers' Casino - Rear of I. G. Farben
Building (Map C)

SWIMMING POOLS

1. Victory Park (Index Map)
2. 5 Am Schwimmbad (Indoors) (Map F)
3. Hall Bath (Indoors) - Fechenheim (Index Map)
4. Kronberg Castle - Officers (Index Map)
5. Oberursel (Index Map)
6. Bad Homburg (Index Map)



ENTRANCE TO "ABLE" BARRACKS

CHAPELS



The personnel of the Headquarters are fortunate in having numerous chapels. The main chapels and chaplains' offices are within the restricted area, and others may be found in unit areas.

Several cathedrals and churches in Frankfurt, of great historical and architectural interest, are open for services. Some of these are the Kaiserdom (finished in 1418), Weissfrauenkirche (a splendid example of medieval architecture built in 1290), and the Dreikönigskirche (built in 1883).

CHAPELS

Hq. Command: Catholic - 68 Holzhausen Str. (Map D)
(Sunday Services at Theater No. 1) (Map C)
Protestant - 241 Eschersheimer Landstr. (Map C)
Jewish - Friedrich Strasse (Map C)
106 Kaiser Strasse, Offenbach

CHAPLAINS' OFFICES

Protestant (Chaplain Alvin A. Kapp)
68 Holzhausen Strasse (Map D)
Catholic (Chaplain J. A. Keenan)
68 Holzhausen Strasse (Map D)
Jewish (Chaplain George Vida)
Elsa Brandström Strasse (Map E)

*"The sight of a white church above thin trees in a city square
Amazes my eyes as though it were the Parthenon."*

Amy Lowell

TRANSPORTATION

"When I was at home, I was in a better place; but travelers must be content."

Shakespeare

Before the newcomer has been in Frankfurt long, he will have noticed the olive-drab trolleys which run at frequent intervals from the Main Railway Station past USFET Headquarters to billeting areas on the outskirts of the city. Trolley No. 13 will take you to Heddernheim, where personnel of Hq. Co., Hq. Command and other organizations are billeted. Trolley No. 39 takes you near areas "A", "B", "C", and to Preungesheim where you transfer to the shuttle bus for areas "D" and "E". Both of these trolleys go past the WAC Circle, where you find Theater No. 1, two Post Exchanges, the Pressing Shop, and Beauty Shop. The GI trolleys run until 2400.

The transportation routes throughout the city will be found on page 16 and on the transportation chart in the center of the Handbook.

Bus and trolley timetables are on pages 17-22 inclusive.

TRANSPORTATION

AIR PORTS

- Y74 Reichsautobahn, Ffm Bad Nauheim (Index Map)
- Y75 Wiesbadener Strasse (N 40) . . . (Index Map)
- Y91 Hanauer Landstrasse (Hanau) . . . (Index Map)

ATC

- 8 Taunus Anlage (Map E)
- Hours: 0830-1730 daily

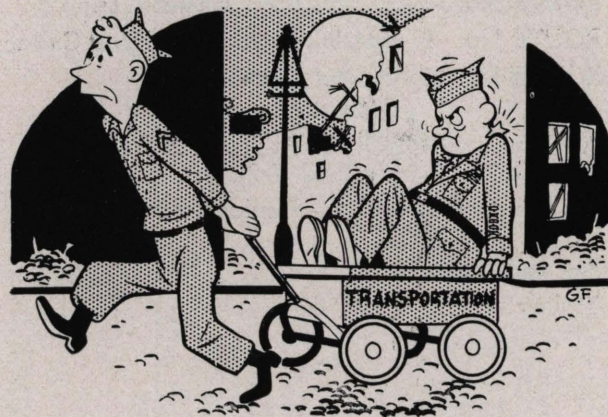
BUS AND TROLLEY SERVICE - (SEE SCHEDULES)

MOTOR POOL

- Cars-Dispatch hut rear of Casino (Map C)
- Trucks - "A" Area (Map B)
- Servicing for all at "A" Area (Map B)

RAILWAY STATIONS

- RTO: Main Railway station, Hindenburgplatz. (Map E)
- South Railway station, Hedderichstr. (Index Map)



ROUTES

- * ROUTE No. 1 - "A" "B" "C" "D" "E" Barracks, AEF Club, WAC Area, ROUNDUP and Central Station.
- ROUTE No. 2 - ROUNDUP - Y-74 and Y-75
- ROUTE No. 3 - ROUNDUP - Bad Homburg (ICD)
- ROUTE No. 4 - ROUNDUP - Olympic pool
- ROUTE No. 5 - ROUNDUP - Kronberg Castle
- ROUTE No. 6 - ROUNDUP - Wiesbaden
- + ROUTE No. 7 - Central Station - ROUNDUP - Heddernheim
- ROUTE No. 8 - ROUNDUP - Höchst Casino
- ROUTE No. 9 - EM Billet (Höchst) - Höchst Casino
- ROUTE No. 10 - Höchst Officers' Billet Höchst Casino
- ATC Bus - ROUNDUP - P&T (ATC) Frankfurt-Airfield Y-91
- RTO Bus - ROUNDUP - Frankfurt South Station

- * Bus and Trolley
- + Trolley

ROUTE 1

TIMETABLE

Special Trolley Service
Central Station — Headquarters (Bremer Str.) — Preungesheim (Barracks)
("A" "B" "C" "D" "E" Barracks, WAC Area, AEF Club, Roundup)

LINE 39

STOPS: INBOUND TO CENTRAL STATION

"D" and "E" Barracks	Bus Lvs.	0739	0754	0759	0924	1154	1339	1639	1839
AEF Club	" "	0740	0755	Every	Every	Every	Every	Every	Every
Preungesheim	" arr.	0743	0758	5	15	5	15	5	15
Preungesheim	Streetcar Lvs.	0745	0800	Min	Min	Min	Min	Min	Min
Giesener Str. (A & C areas)	" "	0749	0804	to	to	to	to	to	to
Dornbusch	" "	0756	0811	0924	1154	1339	1639	1839	2330
Adickes-Allee (WAC PX)	" "	0757	0812	hours	hours	hours	hours	hours	hours
Bremer Str. (Hgs)	" "	0759	0814	incl	incl	incl	incl	incl	incl
Grüneburgweg/Reuterweg	" "	0800	0815						
Central Station	" arr.	0807	0822						

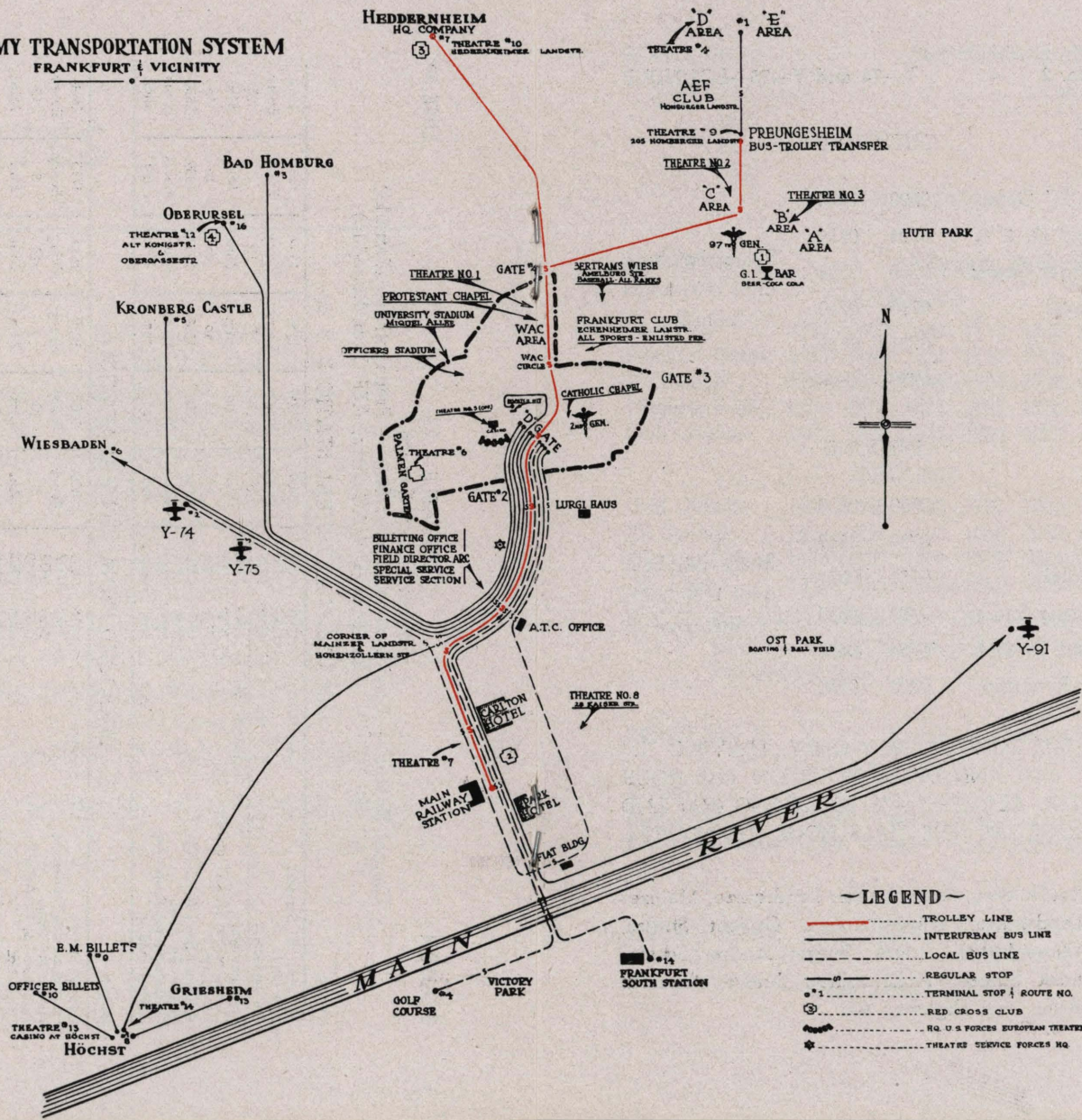
STOPS:

OUTBOUND FROM CENTRAL STATION

Central Station	Streetcar Lvs.	0815	0830	0835	1000	1230	1415	1715	1930
Grüneburgweg/Reuterweg	" "	0822	0837	Every	Every	Every	Every	Every	Every
Bremer Str. (Hgs)	" "	0823	0838	5	15	5	15	5	15
Adickes-Allee (WAC PX)	" "	0825	0840	Min	Min	Min	Min	Min	Min
Dornbusch	" "	0826	0841	to	to	to	to	to	to
Giesener Str. (A & C areas)	" "	0833	0848	1000	1230	1415	1715	1930	2400
Preungesheim	" arr.	0837	0852	hours	hours	hours	hours	hours	hours
Preungesheim	Bus Lvs.	0840	0855	incl	incl	incl	incl	incl	incl
AEF Club	" "	0843	0858						
"D" and "E" Barracks	" arr.	0844	0859						

ROUTE: Eschersheimer Landstrasse, Marbachweg and Homburger Landstrasse.

ARMY TRANSPORTATION SYSTEM FRANKFURT & VICINITY



~LEGEND~

- TROLLEY LINE
- INTERURBAN BUS LINE
- - - LOCAL BUS LINE
- REGULAR STOP
- ⊙ TERMINAL STOP | ROUTE NO.
- ⊕ RED CROSS CLUB
- ⊙ Hq. U.S. FORCES EUROPEAN THEATRE
- ★ THEATRE SERVICE FORCES Hq.

ROUTE No. 2 **Y-74 and Y-75—ROUNDUP**

STOPS: **OUTBOUND**

Roundup "D" Gate	0700	0730	
Finance and Q. & A	0704	0734	
No. 75 Bürger Strasse	0708	0738	Every half-hour
Carlton Hotel	0710	0740	until 1900 hours
Y-75	0721	0751	inclusive
Y-74	0730	0800	

STOPS: **INBOUND**

Y-74	0730	0800	
Y-75	0739	0809	
Carlton Hotel	0751	0821	Every half-hour
No. 75 Bürger Strasse	0753	0823	until 1930 hours
Finance and Q. & A	0756	0826	inclusive
"D" Gate, Roundup	0800	0830	

SUNDAY BUS RUNS HOURLY ONLY, LEAVING "D" GATE AT 0700 AND EVERY HOUR ON THE HOUR THEREAFTER. LEAVES Y-74, BEGINNING 0730 AND EVERY HOUR ON THE HALF-HOUR THEREAFTER.

ROUTE: Reuter Weg, Bockenheimer Landstrasse, Mainzer Landstrasse, Weser Strasse, Gutleut Strasse, Wiesenhütten Strasse, Bürger Strasse, Scharnhorst Strasse, Hohenzollern Strasse, Bismarck Allee, and Highway 40.

ROUTE No. 3 **Bad Homburg—ROUNDUP**

Leave "D" Gate		Leave ICD
1015		1045
1215		1400
1500		1530

Daily except Sunday

ROUTE No. 4 **Olympic Pool—ROUNDUP**

OUTBOUND

"D" Gate	1330	1445	1600	1715	1930	2045	2145
Billeting Office	1334	1449	1604	1719	1934	2049	2149
RR Station	1338	1453	1608	1723	1938	2053	2153
Olympic Pool	1355	1510	1625	1740	1955	2110	2210
Golf Course	1405	1520	1635	1750	2005	2120	2220

INBOUND

Golf Course	1405	1520	1635	1750	2005	2120	2220
RR Station	1422	1537	1652	1807	2022	2137	2237
Billeting Office	1426	1541	1656	1811	2026	2141	2241
"D" Gate	1430	1545	1700	1815	2030	2145	2245

ROUTE: Reuterweg, Anlage Bockenheimer Strasse, Mainzer Landstrasse, Karl Strasse, Scharnhorst Strasse and Forsthaus Strasse.

ROUTE No. 5 **Kronberg Castle—ROUNDUP**

OUTBOUND*

STOPS:

Motor Pool	1300	1400	Every hour on the hour
Kronberg Castle	1340	1440	until 2200 hours incl.

INBOUND*

Kronberg Castle	1400	1500	Every hour on the hour
Motor Pool	1400	1540	until 2300 hours incl.

*Daily except Sunday

ROUTE No. 5 cont'd

SUNDAY SERVICE — Kronberg Castle—ROUNDUP

OUTBOUND

Motor Pool . .	1300	1330	Every half-hour until
Kronberg Castle	1340	1410	2230 hours inclusive.

INBOUND

Kronberg Castle	1400	1430	Every half-hour until
Motor Pool . .	1440	1510	2300 hours inclusive.

ROUTE No. 6

ROUNDUP—Wiesbaden

Lv "D" Gate	Lv Main Office Bldg
I. G. Farben	Wiesbaden
0900	1030
1100	1230
1330	1500
1430	1730

NOTE: The Main Office Building at Wiesbaden was formerly the Headquarters of the 12th Army Group.

Special Trolley Service

ROUTE No. 7

LINE 13

INBOUND

Hedderheim (Hq Company)	Lvs	0700	0730	0800	and	2330
Adickes Allee (WAC PX)	"	0712	0742	0812	every	2342
I. G. Hochhaus (Roundup)	"	0714	0744	0814	half-	2344
Grüneburgweg/Reuterweg	"	0715	0745	0815	hour	2345
Zimmerweg	"	0719	0749	0810	until	2349
Hauptbahnhof (RR Station)	Arr	0722	0752	0822		2352

OUTBOUND

Hauptbahnhof (RR Station)	Lvs	0730	0800	0830	and	2405
Zimmerweg	"	0733	0803	0833	every	2403
Grüneburgweg/Reuterweg	"	0737	0807	0837	half-	2407
I. G. Hochhaus (Roundup)	"	0738	0808	0838	hour	2408
Adickes Allee (WAC PX)	"	0740	0810	0840	until	2410
Hedderheim (Hq Company)	Arr	0752	0822	0852		2422

These cars are for use of the Armed Forces only and all such personnel may use them without charge.

ROUTE No. 8

Höchst Casino-ROUNDUP

Lv "D" Gate (ROUNDUP)

Lv Höchst (Casino)

0730	1000	1530	1900	0800	1000	1530	1930
and	and	and	and	and	and	and	and
every	every	every	every	every	every	every	every
half-	half-	half-	half-	half-	half-	half-	half-
hour	hour	hour	hour	hour	hour	hour	hour
until	until	until	until	until	until	until	until
0930	1500	1830	2300	0930	1500	1900	2330
hours	hours	hours	hours	hours	hours	hours	hours
incl.	incl.	incl.	incl.	incl.	incl.	incl.	incl.

ROUTE No. 9

EM Billet (Höchst)-Casino (Höchst)

Leave EM Billet at 0730 and 0800 daily except Sunday

Daily except Sunday

ROUTE No. 10

Höchst Officers' Billet-Casino (Höchst)

INBOUND

Officers Billet	0700	0712	Every 12 min. until
Casino	0706	0718	0900 hours inclusive

OUTBOUND

Casino	1800	1812	Every 12 min. until
Officers Billet	1806	1818	2030 hours inclusive

Sunday Service

Officers Billet	1100	1112	Every 12 min. until
Casino	1106	1118	1400 hours inclusive

NOTE: On Wednesday and Saturday of each week there will be half-hour service from 2030 hours to 2300 hours incl. to augment the above schedule between the Höchst Officers Billet area and the Höchst Casino to provide transportation for the Officers Dances.

ATC BUS ROUNDUP - P & T Frankfurt - Airfield Y-91

INBOUND	OUTBOUND
Terminal Y-91	P & T Frankfurt
(Leave)	(Leave)
0800	0900
0900	1000
1000	1100
1030 and every half-hour until	1130 and every half-hour until
1800	1900
1900	2000
2000	2100
2100	2200
2200	2300

Incoming buses from Y-91 will make regular stop at "D" gate I. G. Farben Building and proceed from there to the P & T Office (ATC), 15 Taunus Anlage, Frankfurt for scheduled departure. Passengers for Y-91 should be at the BUS STOP, "D" Gate, I. G. Farben Building at least ten (10) minutes prior to the departure time of the bus from the P & T Office.

RTO BUS ROUNDUP - Frankfurt South Station

Bus service to the Frankfurt South Station is available at 1700 hours daily from "D" Gate. This is solely for the use of individuals using the Paris train which leaves from that station at 1800 hours daily.

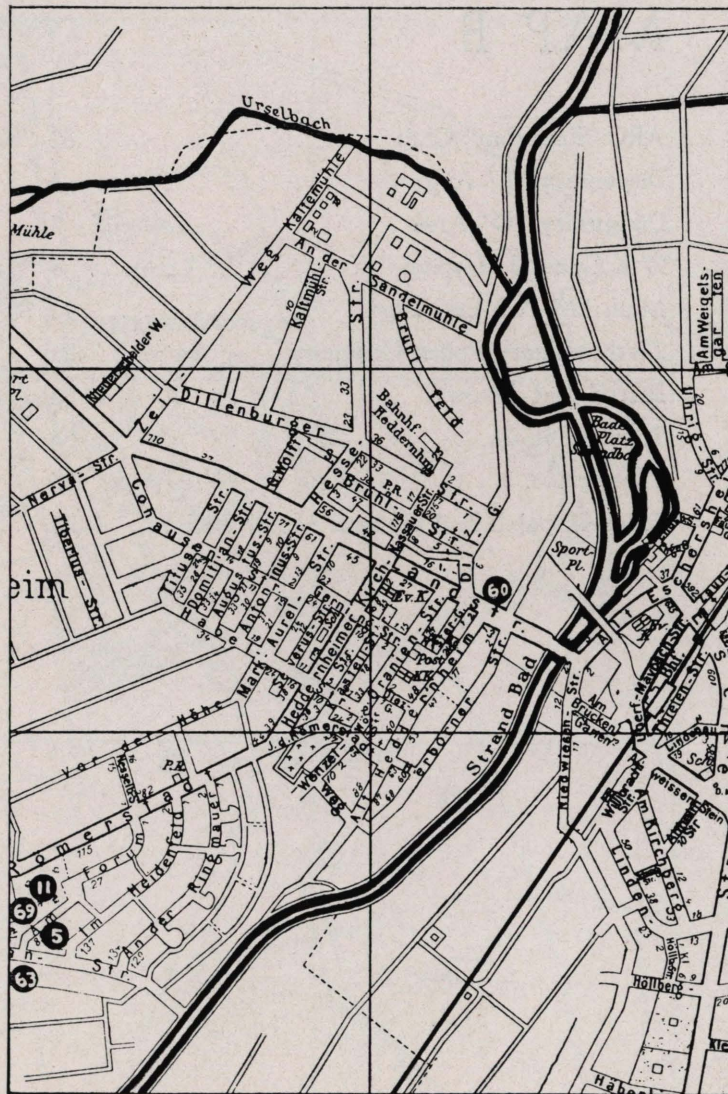
MAPS

One can find the location of a particular installation or agency listed in the text by using the index facing each sectional map. For example, if you wish to find the Palmengarten Red Cross Club, look under Recreation. Opposite the name of the Club you will find (Map C). Referring to the Map C index, you will find (64) after Palmengarten Red Cross Club. Looking at Map C, you find point (64). That is the location of the Club.

Some installations and agencies will be found only on the Index Map (in the back of the book), because they are located in areas not covered by the more detailed sectional maps. The area of each sectional map is indicated on the Index Map, which represents the USFET area and environs.

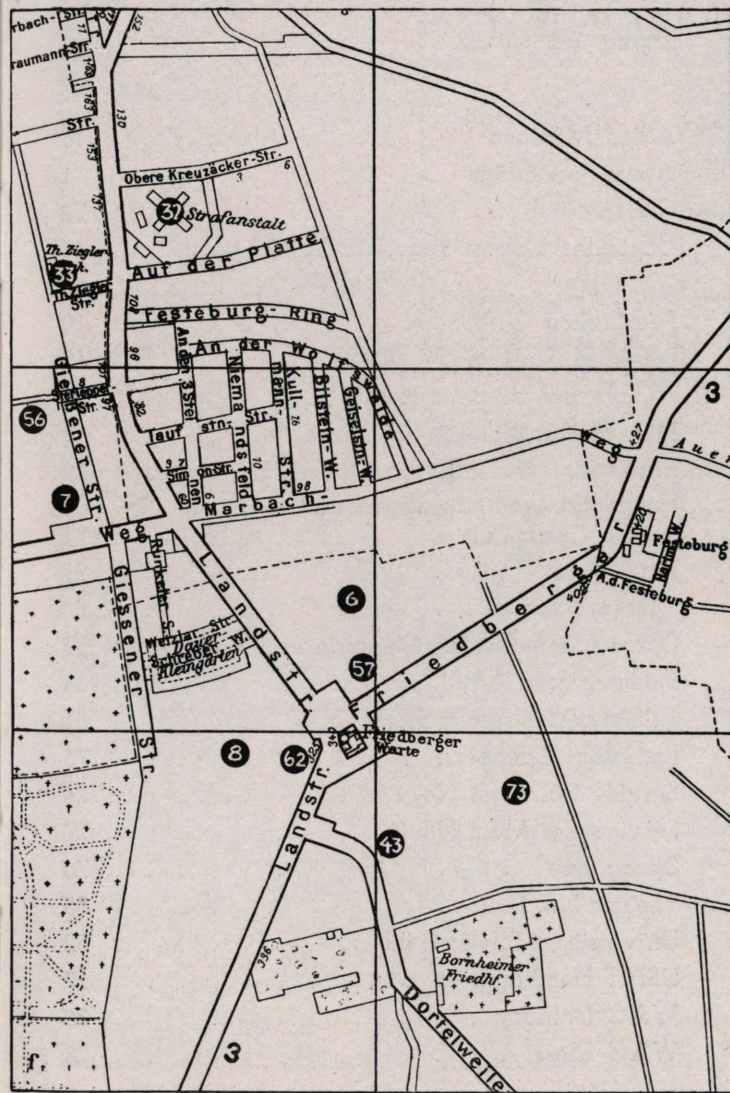
MAP A

ARC "Do-nut Dugout", Heddernheim	63
Chapel	69
Dispensary	5
Fire Station	11
Theater No. 10	60



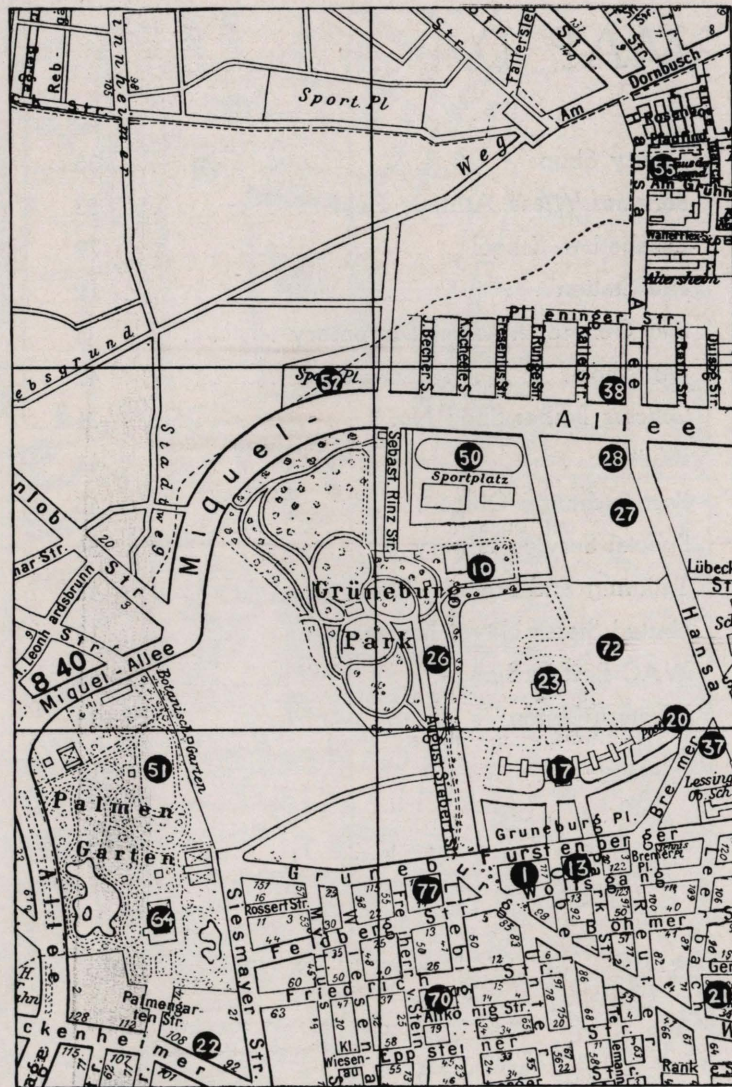
MAP B

ARC "Roundup" Club	62
Dispensary "B" Area	6
Dispensary "C" Area	7
97th General Hospital	8
Main EM Post Exchange	43
234th Military Police Company	33
Post Guard-house	32
Theater No. 2	56
Theater No. 3	57
Truck Dispatch and General Motor Pool	73



MAP C

Allied Missions	13
Army Post Office	1
Car Dispatch	72
Chaplains' Offices and Catholic Chapel	68
"D" Gate	20
Fire Station	10
Frankfurt Club	49
I. G. Farben Athletic Field	50
I. G. Farben Building	17
Information and Education Office Hq. Command	22
Information and Education Unit School Hq. Command	77
Lurgi Haus	21
Officers' Casino	23
Officers Laundry, Dry Cleaning, and Shoe Repair	37
Palmengarten ARC	64
Palmengarten Sports Fields	51
Protestant Chapel	76
Service Co. Mess No. 1	26
Service Co. Mess No. 2	27
Synagogue	70
Theater No. 1	55
University Athletic Field	52
USFET Headquarters	17
WAC Laundry	38
WAC Mess	28



MAP D

Beauty Shop	35
Bertrams Wiese Athletic Field	53
Elizabethan School	79
Fire Station	12
2nd General Medical Dispensary	4
Gift Shop	42
Officers Barber Shop No. 1	34
PX "C"	44
Post Exchange Office	45
Special Service Library	54
Tailoring and Pressing Shop	48
United States Naval Forces	18
WAC Post Exchange	46
Western Union	36



MAP E

Air Transportation Office	75
ARC Field Director's Office	2
ARC Schuman Club	65
Carlton Hotel	24
Excelsior Hotel	47
Finance Office	9
Germania Rowing Club	66
GI Nickel Bar	65
Information Booth	19
Jewish Chaplain's Office	71
Military Government	15
Military Police Town Office	30
Officers Sales Store	47
Park Hotel	25
Photo Developing	39
Photograph Studio	41
Provost Marshal	31
PX "G"	78
Quartering and Accommodations	3
Railroad Transportation Office	74
Rendezvous Club	80
Special Service	29
Theater No. 7	58
Theater No. 8	59
TSFET (Formerly FIAT Building)	14
TSFET Headquarters	16



MAP F

Photo Developing	40
Swimming Pool No. 2	67
Theater No. 11	61



HÖCHST

Höchst is a suburb located about two and a half miles west of Frankfurt am Main. Below are listed the administrative and recreational agencies which administer and service the area comprising Höchst and environs.

Höchst can be reached by following Mainzer Landstrasse from Frankfurt. There is daily bus service between the Höchst Casino and "D" Gate of the I. G. Farben building in Frankfurt. See "Route" 8 in the Bus Schedule.

AFN-FRANKFURT 1	McNAIR BARRACKS (See Diagram)
1 Burg-Graben	
ARC CLUB 2	MILITARY GOVERNMENT . 12
11 Königsteiner Strasse	87 Bolongaro Strasse
CASINO 3	OFFICE MIL. GOV'T. U.S. ZONE 8
Brüning Strasse	Brüning Strasse
DISPENSARY 4	OFFICERS BILLETS (See Diagram)
Brüning Strasse	PX "F" 3
EM MESS HALL 5	Brüning Strasse
Brüning Strasse	PX "H" 16
FIAT 6	McNair Barracks
Exposition Building	QUARTERING AND ACCOMODATIONS . . . 10
FIRE DEPARTMENT 7	Hq. Command Bldg.
Lucius Str., corner of Brüning Strasse	Brüning Strasse
HALF-WAY HOME CLUB . . 9	THEATER NO. 13 . . . 13
7-8 Mainberg Strasse (EM Bar)	Kasino Strasse
HEADQUARTERS COMMAND 10	THEATER NO. 14 . . . 14
Brüning Strasse	Emmerich Joseph Str.
LOW POINTERS INN . . . 11	WAC BILLETS (See Diagram)
5 Gebeschus Strasse (GI Club)	UNRRA BILLETS (See Diagram)
	UNRRA OFFICES 15
	Brüning Strasse

